

Papatuanuku Term 1 2019

NEWSLETTER



Papatuanuku Teachers (From Left to right)

Bronagh Crook: Year 2 Teacher in Orongorongo. Monday/Tuesday

Michelle James: Team Leader and Year 2 Teacher in Orongorongo. Wednesday/Thursday/Friday

Amanda Smith: Reception Class in Waiopahu.

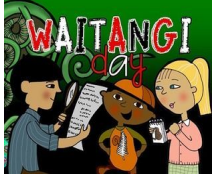
Sarah Moorhouse: Year 1 Teacher in Rimutaka.



Our Support Team (From Left to right starting from the back row)

Joana Softe, Maria Gerondis, Dion Gardner

Important Dates

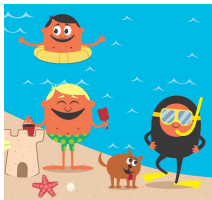


Waitangi Day

6th of February

Hataitai School will be closed on the Wednesday

Scorching Bay School Picnic



8th of February

Friends and whanau are welcome to join us for our annual school picnic at Scorching Bay Beach on the 8th of February. With our younger aged children we encourage as many parents as possible to join us to support the children at their first school beach day. Please ensure your child has suitable clothing, including a hat and clothing to protect your child from the sun and a packed lunch with a drink bottle. Sunblock will be provided but we ask that you lather your child up before school. We also ask that you teach our child to regularly sunblock themselves. If your child would like to take buckets or a spade we ask that these are well named. An email early next week will have more details.

Please email your child's teacher now to:

- Confirm that you give permission for your child to attend the picnic
- Indicate if you will be attending
- Let us know if your child is **not** confident in ocean water
- Inform us of anything else you think we should know before we leave for Scorching bay

Please Note: We will be travelling on buses leaving school at approximately 10:00am and returning at 1:00pm. The rest of the school will return from 2:00pm onwards

If you plan to leave the beach with your child please sign your child out with their homeclass teacher.

Meet the Team

Tuesday 12th of February

We will be holding a Meet The Team evening on the 12th of February. This will run from 5pm – 5:45pm. We will meet in Rimutaka for a brief introduction before breaking into Reception, Year 1 and Year 2 groups so that we can talk specifically about your child's learning programme and how you can support your child's learning at home.





Swimming

Every week commencing from the 12 of February (except for the 19 of March.)

Swimming lessons will begin in Week 3 (12th of February) at the Aquatic Centre in Kilbirnie on a Tuesday. The sessions will be lessons only. 'Free play' will not be offered. To help prepare your child we ask that they are able to dress themselves, have a large swimming bag to put all their belongings in, and a plastic bag for wet clothing. Please ensure all clothing is well named. If you have any concerns about how your child is grouped for their lessons or you are able to provide parent help please discuss this with your child's homeclass teacher.

Times: Year 1- session time 12-12:30pm and Year 2- session time 12:20 - 1 pm.

Capital E



19th of March

On Tuesday the 19th of March, Papatuanuku (Yr 1-2) are attending the Capital E Arts Festival for the day. We will see the shows [GABEZ](#) at Circa Theatre One, [Treat](#) at Mac's Function Centre and [Wolfgang's Magical Musical Circus](#) at the Opera House. We will require parent volunteers for this trip to go ahead to ensure the children have a safe and enjoyable visit. We need 11 parents - get in quick as spaces fill up quickly! Unfortunately we are unable to take parents with toddlers. Please contact your child's homeclass teacher if you can assist.



Learning Conferences

5th and 7th of March

Booking details will be made available in a few weeks time.

Sun Hats and Sunscreen

In Terms One and Four all children must wear a sunhat when at school. Please ensure that your child's hat is well named. Children must play under the shade cloth if they have forgotten their hat. We also suggest water resistant sunblock be applied each morning before school. Please also ensure your child comes to school with a named drink bottle.

School Hours

Our school opens at **8:15am** and teachers are in the learning spaces by 8:30am. Our learning begins at 8:55am. Please make sure that your children are here from 8:30 am onwards to ensure they have had enough time to read the message board, sign in and help set up the classroom. Please ensure your child has packed their book bag and/or poetry book in their bags.

We encourage families to leave by **8:45am** to give children time to settle and play with friends.

Please inform the school office AS WELL AS the classroom teacher if your child will not be attending school on any given day. If your child is late for school then you will need to sign them in at the office.

After school, children are to be picked up from their homeclass.

Please inform your child's homeclass teacher if they will be attending After School Care and/or Kelly Sports so that we can ensure they get to the right place after school.

If your child arrives after 8:55am. The parent/caregiver must sign the child in at the school office. ALL attendances including lateness, is recorded for the Ministry of Education.

Getting in Contact

Meeting with Teachers: We love to build relationships with Whanau members. However, before school teachers are busy preparing for the day ahead or may be in a meeting, so if you need more than a few minutes of our time, please make an appointment. If at anytime you have any concerns, questions, information and/or positive feedback to share, please contact your home class teacher as your first port of call.

Emails are generally checked between 3:30 - 5:30pm. Due to the nature of our profession we are often unable to respond to emails within the same day. We endeavor to respond as soon as possible.

Please ensure that your child knows their after school care arrangements before they arrive at school as teachers are not able to check emails regarding updates during the day. Any last minute changes must go through the office.

michelle.james@hataitai.school.nz

bronah.crook@hataitai.school.nz

amanda.smith@hataitai.school.nz

sarah.moorhouse@hataitai.school.nz

Whanau Support

Having Whanau in the classroom enhances the children's educational experience. We always value the parents who have continued to help support learning in the classroom. If you are able to help out in any way, please let your child's home-class teacher know. To this end, parent helpers are asked to follow these rules regarding conduct.

- Please do not discuss a child's work, behaviour or progress with any other parent or child.
- Should you have a concern or question, please bring it directly to the child's teacher.
- Should another parent voice a concern regarding their child to you, please ask him or her to discuss it directly with their child's teacher. Volunteers are not asked, or expected, to address other parents' individual concerns.
- Our team and its students' parents expect the highest level of discretion by staff and parents in regard to confidential information, files or personal data on the children. Conversations and behaviour must reflect this level of discretion.

If you are a parent help you are expected to follow teachers instruction and this may or may not mean you are working with your child directly. We appreciate that it takes a community to help all our learners and any time that can be spared to help is much appreciated.

Safety considerations

Safety at Hataitai School is of utmost importance. Volunteers are asked to sign in at the school office when you arrive and sign out as you leave. Badges are to be worn so members of the school staff know you have checked into the office. In the event of an emergency please follow the directions of the classroom teacher.

Year Two Sound Poem Books

There are four books of sound poems that will be part of your child's stationary over the course of the year. We have four books so that they are easier for the children to manage and, the children will work through one each term. They will be used daily in the classroom as a resource to help develop your child's phonological awareness. Each week we will be focusing on a specific sound and we will be using a poem from the book each day to highlight the focus sound. You can also help us by working with your child at home and encouraging them to come up with words that start with, have in the middle or on the end, the focus sound, and then getting them to record it. Having a good phonological awareness empowers children to write more confidently and participate more fully in all curriculum areas, so we would really appreciate your support in this area. You will be invoiced or you can purchase the poetry book from the office for \$15. Costs cover printing.

Useful websites- Click on the links below



[Sunshine online](#)

Sunshine Online is a digital literacy program. It has been designed to help children aged 4 to 10+ learn to read and develop the skills needed for continuing reading independence and success. The program also uses maths stories to develop skills and understandings in early numeracy.

Username: hataitai

Password: reading